



cadherin mouse mAb(ABT123)

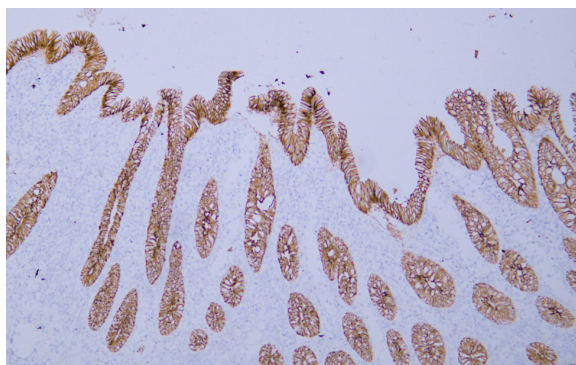
Catalog No	YP-Ab-15536
Isotype	IgG
Reactivity	Human;Mouse;Rat
Applications	IHC, WB
Gene Name	
Protein Name	cadherin
Immunogen	Synthesized peptide derived from human cadherin
Specificity	The antibody can recognize many isotypes of cadherin including E-cadherin, N-cadherin, P-cadherin and R-cadherin. In western blotting of A431 and MCF7 cell lysates, the antibody can label a 130KDa b
Formulation	Liquid in PBS containing 50% glycerol, 0.5% BSA and 0.89% sodium azide.
Source	Mouse, Monoclonal/IgG2a, Kappa
Purification	The antibody was affinity-purified from mouse ascites by affinity-chromatography using specific immunogen.
Dilution	IHC-p 1:100-500, WB 1:200-1000, IF 1:100-500
Concentration	1 mg/ml
Purity	≥90%
Storage Stability	-20°C/1 year
Synonyms	ERROR 42
Observed Band	
Cell Pathway	Cell junction, adherens junction . Cell membrane ; Single-pass type I membrane protein. Endosome. Golgi apparatus, trans-Golgi network. Colocalizes with DLGAP5 at sites of cell-cell contact in intestinal epithelial cells. Anchored to actin microfilaments through association with alpha-, beta- and gamma-catenin. Sequential proteolysis induced by apoptosis or calcium influx, results in translocation from sites of cell-cell contact to the cytoplasm. Colocalizes with RAB11A endosomes during its transport from the Golgi apparatus to the plasma membrane.
Tissue Specificity	Non-neural epithelial tissues.
Function	ERROR 42
Background	ERROR 42
matters needing attention	Avoid repeated freezing and thawing!



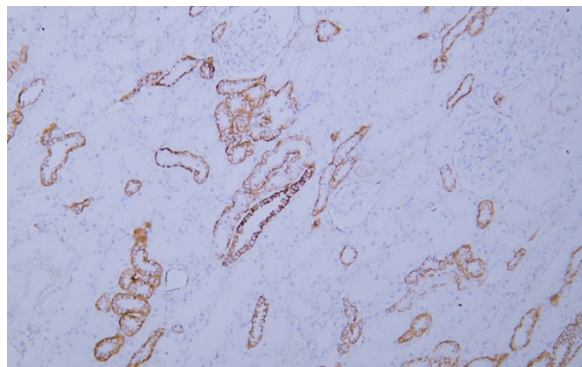
Usage suggestions

This product can be used in immunological reaction related experiments. For more information, please consult technical personnel.

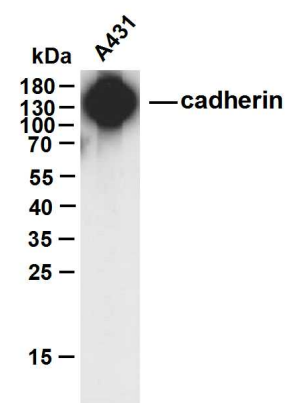
Products Images



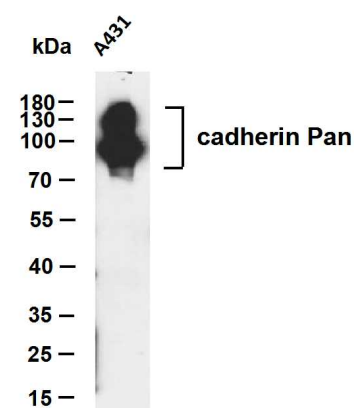
Human appendix tissue was stained with anti-cadherin(ABT123) antibody.



Human kidney tissue was stained with anti-cadherin(ABT123) antibody.



A431 whole cell lysates were separated by 10% SDS-PAGE, and the membrane was blotted with anti-cadherin(ABT123) antibody. The HRP-conjugated Goat anti-Mouse IgG(H + L) antibody was used to detect the antibody. Lane 1: A431 Predicted band size: 125-140kDa Observed band size: 130kDa



A431 whole cell lysates were separated by 10% SDS-PAGE, and the membrane was blotted with anti-cadherin Pan(ABT123) antibody. The HRP-conjugated Goat anti-Mouse IgG(H + L) antibody was used to detect the antibody. Lane 1: A431 Predicted band size: 125-140kDa Observed band size: 125-140kDa